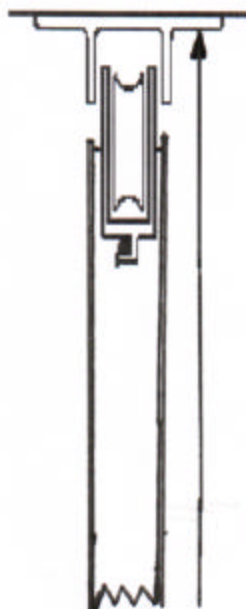


Measurement Instructions For Your Patio Screen Door

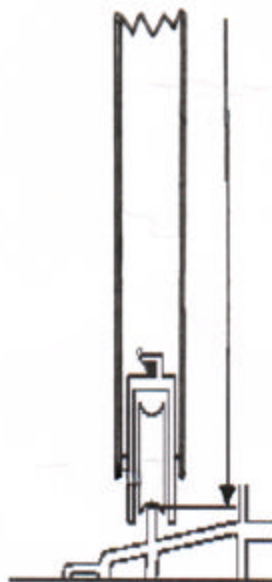
Step 1 Measuring for Height



There is a "U" shape track at the top of your patio screen door.

1. Measure to the top (inside) of that track
2. Measure all the way down to the **TOP** of the lip that the bottom roller rides on.
3. Subtract $3/16$ " from the distance obtained from steps 1 & 2

Steps 1-3 should yield a perfect fit



Step 2 Measuring for Width

